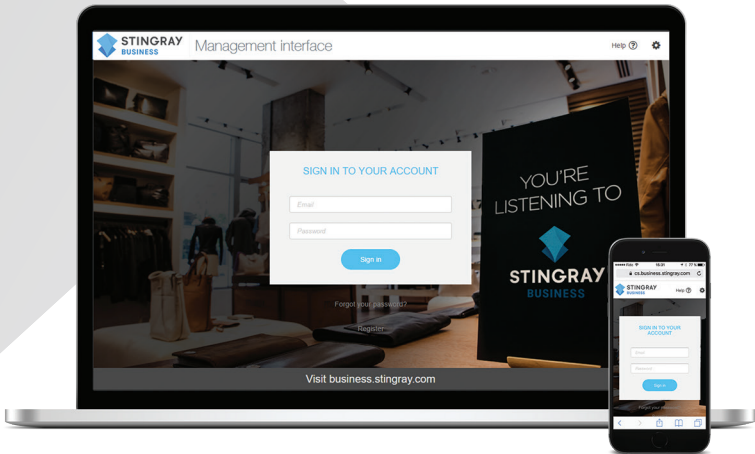




STINGRAY
BUSINESS



SB-3 MEDIA PLAYER

Installation Guide

2 SAFETY INSTRUCTIONS

- The SB-3 is designed to be placed horizontally and right side up. Other positions may cause problems with air flow and shorten the lifespan of the components.
- The SB-3 should be placed in a clean, well-ventilated area. Do not stack items on or against it.
- Ensure all cabling is routed properly and safely.
- Ensure your SB-3 is plugged into a properly grounded, always-on AC electrical outlet.



WARNING

Device should remain powered at all times.

To reduce the risk of fire or electric shock, do not expose this unit to rain or other forms of moisture.

To prevent electric shock due to exposure of blades, do not connect the polarized plug of the external power supply to an extension cord, receptacle or other outlet unless the blades can be fully inserted.

To reduce the risk of any problems with your SB player, never place the unit on an operating electronic or a surface that may generate heat.

ALL GOOD VIBES

Stingray Business is thrilled to offer you its newest media player, the SB-3 (Stingray Box); the little box with a big sound. Affordable, user-friendly and built to last, the SB-3's impeccable sound and image quality will allow you to connect with your customers through your very own musical and digital signage signature. The best music for every moment, place and mood in your life.

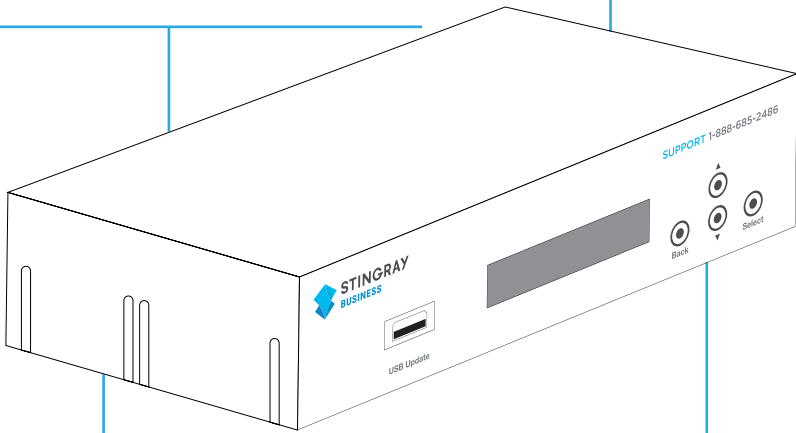
4 YOUR DEVICE AT A GLANCE

Content

Choose from our preprogrammed collection of channels or craft a totally unique ambiance for your store without ever having to worry about copyright fees. Integrate on-hold music and custom messaging seamlessly into your schedule to maximize every moment you have a customer's attention.

Installation

Not a techie? Not a problem! Setting up the SB-3 is a walk in the park. Turn to page 5 to learn how to get rolling in no time. Can't find what you are looking for? Our resourceful support team is at your service at all times.



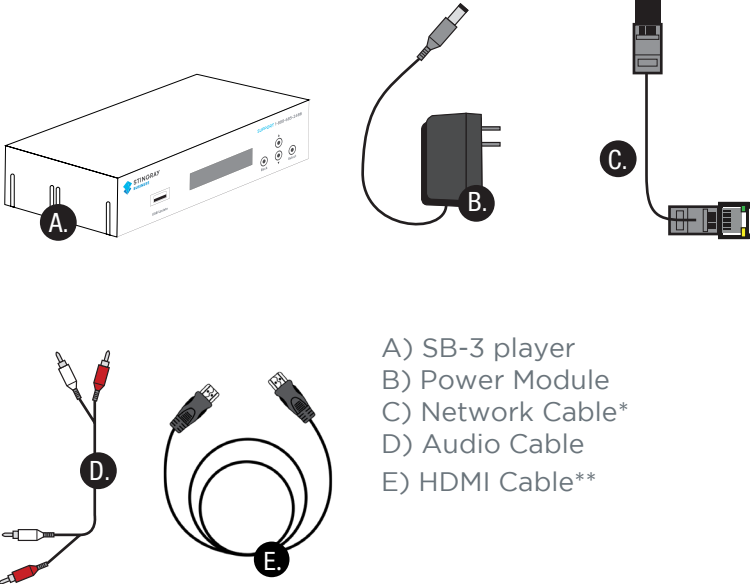
Features and functionalities

- Adapt music, messaging and digital signage to specific spaces with the zoning option.
- Multiple features and options available through a remote based control site: Block songs, schedule messages, select programs and more.
- LCD front panel displays song title, artist name, message name, network information and menu options.
- Our breakthrough On the Go feature allows you to manage your account from your mobile device.

Content updates

The SB-3 will arrive at your doorstep preloaded with all the good stuff you requested. Subsequent updates will be made available through the web.

Check your product box for the following items. If there are any missing accessories, call 1.888.685.2486 or contact businesssupport@stingray.com. Please keep all packaging material for later use in case your SB-3 must be re-shipped.



- A) SB-3 player
- B) Power Module
- C) Network Cable*
- D) Audio Cable
- E) HDMI Cable**

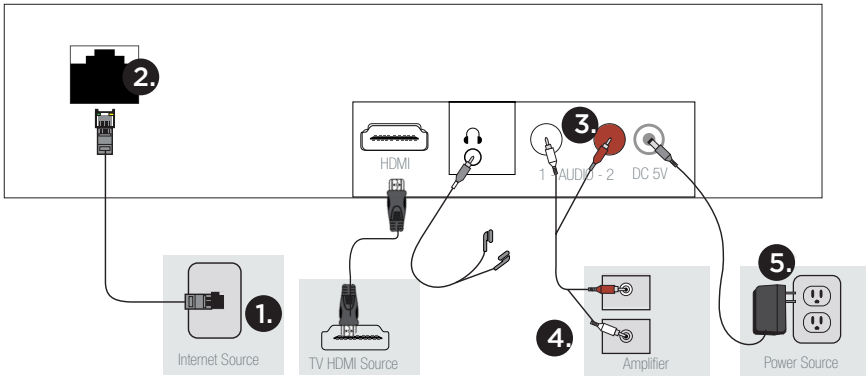
* Only available to clients with an internet connection

** Only included with SB-3s delivering digital signage or music videos.

NOTES

- The items supplied with your product may vary depending on the device model and your amplification system.
- Do not use any unapproved items to ensure the safety and product life span.
- Damages or injuries caused by using unapproved items are not covered by the warranty.

6 SETTING UP



Setting up the network connection

Skip steps 1 and 2 if you don't have an internet connection.

1. Connect the network cable to an active network connection.
2. Connect the other end of the network cable to the ethernet port on the SB-3.

Setting up audio

3. Attach both heads at one end of your audio cable to the audio outputs "1" and "2" on your SB-3.
4. Attach the other ends of your audio cable to the amplifier inputs. If you only have one amplifier input, plug only one cable head in and leave the other one dangling. You will not be needing it.

Setting up on-hold music and messages for phones (Optional)

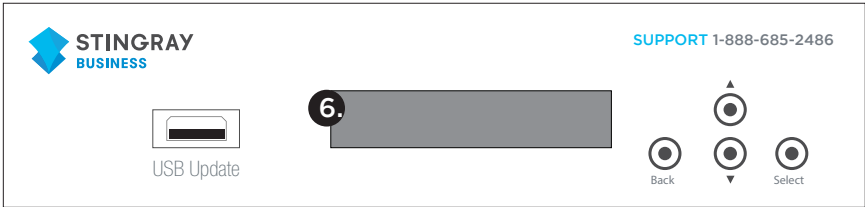
To complete the circuit to the telephone system, follow steps 1 to 4, but make sure you attach one head of the audio cable to the amplifier input linked to music on-hold.

Setting up digital signage or music videos

To connect your SB-3 to a screen, plug one end of the HDMI cable to the HDMI output of your SB-3 and attach the other end to your TV HDMI source.

Setting up power

5. Attach the power module to the power port on the SB-3.
6. The LCD screen on your device will light up to indicate that the device has been plugged in properly.



Activate

7. Activate your device by calling 1.888.571.9040. and entering the 9 digit initialization code on your telephone dial.
8. Adjust volume from your amplifier, device or phone system. .

THIS IS YOUR 9 DIGIT INITIALIZATION CODE

Please refer to page 7
in french instructions

Congratulations your music should start playing in no time!
Remember, your device should remain powered at all times.

Important information for clients receiving internet updates

An active network connection must be maintained to receive updates. Content updates will be downloaded onto your device during the download window period you preselected.

8 MORE

Online Control

Start exploring your new musical universe by logging into the remote SB-3 Management Interface. To access the page, visit <http://cs.business.stingray.com/login> and enter your email address.

Frequently Asked Questions

View our answers to frequently asked questions by visiting <http://business.stingray.com/customer-support> and clicking on SB Media Player Setup and User Guide.

Environmental operation conditions and physical specifications

Use	Indoor
Unit packing (LxWxH)	L 9" x W 9" x H 4"
Dimensions	L 3.75" x W 7 3/4" x H 2"
Power Supply Voltage Input	100-240 VAC, 50/60 hz
Power Consumption	5V, 2A
Supported Connector	2 RCA outputs (2 mono zones or one stereo zone) and one HDMI output.

Contact us

Email businesssupport@stingray.com
Phone 1.888.685.2486