



# STINGRAY BUSINESS




## SB-2 AUDIO PLAYER

User Guide

## 2 IMPORTANT SAFETY INSTRUCTIONS

- The SB-2 is designed to be placed horizontally and right-side up. Other positions may cause problems with air flow and shorten the lifespan of the components.
- The SB-2 should be placed in a clean, well-ventilated area. Do not stack items on or against it.
- Ensure all cabling is routed properly and safely.
- Ensure your SB-2 is plugged into a properly grounded, always-on AC electrical outlet.



**WARNING**

To reduce the risk of fire or electric shock, do not expose this unit to rain or other forms of moisture.

To prevent electric shock due to exposure of blades, do not connect the polarized plug of the external power supply to an extension cord, receptacle or other outlet unless the blades can be fully inserted.

**DEVICE SHOULD REMAIN POWERED AT ALL TIMES**

**WITH STINGRAY BUSINESS, IT'S  
ALL GOOD VIBES**

Stingray Business is thrilled to offer you its newest music player, the SB-2 (Stingray Box); the little box with a big sound. Affordable, user-friendly and built to last, the SB-2's impeccable sound quality will allow you to connect with your customers through your very own musical signature. The best music for every moment, place and mood in your life.

## 4 YOUR DEVICE AT A GLANCE

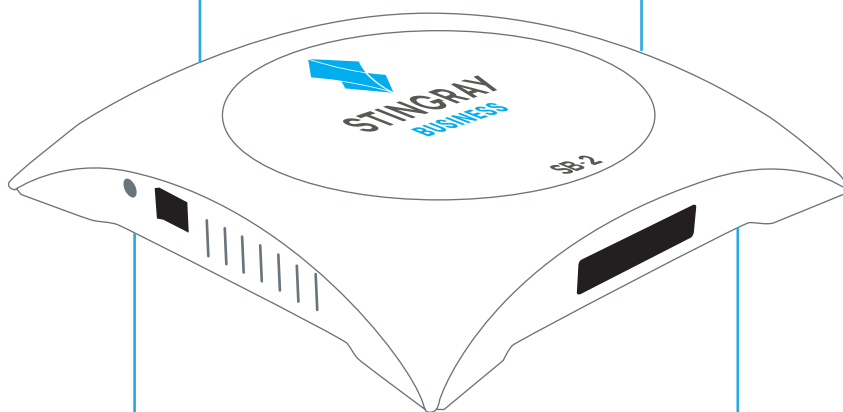
---

### Content

Choose from our preprogrammed collection of music which span a wide variety of genres or craft a totally unique playlist for your store without ever having to worry about copyright fees. Integrate on hold music and custom messaging seamlessly into your schedule to maximize every moment you have a customer's attention.

### Installation

Not a techie? Not a problem! Setting up the SB-2 is a walk in the park. Turn to page 5 to learn how to get rolling in no time. Can't find what you are looking for? Our resourceful support team is at your service at all times.



### Features and functionalities

- Adapt music and messaging to specific spaces with the zoning option
- Multiple features and options available through a remote based control site. Block songs, schedule messages, select programs and more.
- Our breakthrough On the Go feature allows you to manage your account from your mobile device.\*

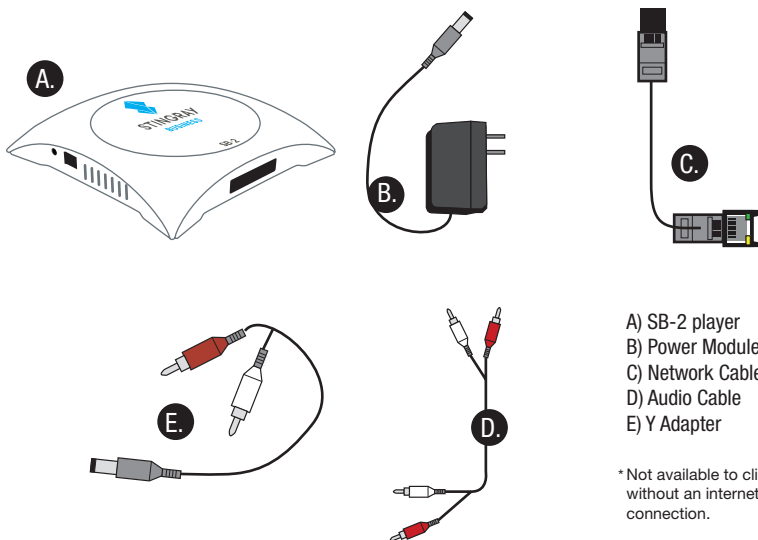
### Content updates

The SB-2 will arrive at your doorstep preloaded with all the good stuff you requested. Subsequent updates will be made available on USB sticks sent by mail or through the web for clients with an internet connection in place.

*\*Only for clients receiving updates by internet*

Check your product box for the following items.

If there are any missing accessories, call 1.888.685.2486 or contact [businesssupport@stingray.com](mailto:businesssupport@stingray.com). Please keep all packaging material for later use in case your SB-2 must be re-shipped.



- A) SB-2 player
- B) Power Module
- C) Network Cable\*
- D) Audio Cable
- E) Y Adapter

\* Not available to clients without an internet connection.

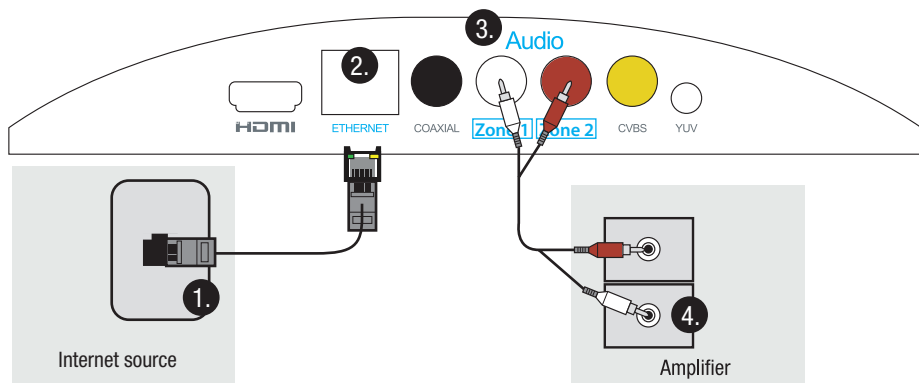
## Hold on to me!

You won't need your Y adapter for the setup but it will come in handy for running soundcheck tests with support if you are experiencing difficulties.

## NOTES

- The items supplied with your product may vary depending on the device model and your amplification system.
- Do not use any unapproved items to ensure the safety and product life span.
- Damages or injuries caused by using unapproved items are not covered by the warranty.

## 6 SETTING UP



### Setting up the network connection

Skip steps 1 and 2 if you don't have an internet connection in place

1. Connect the network cable to an active network connection.
2. Connect the other end of the network cable to the Ethernet port on the SB-2.

### Setting up audio

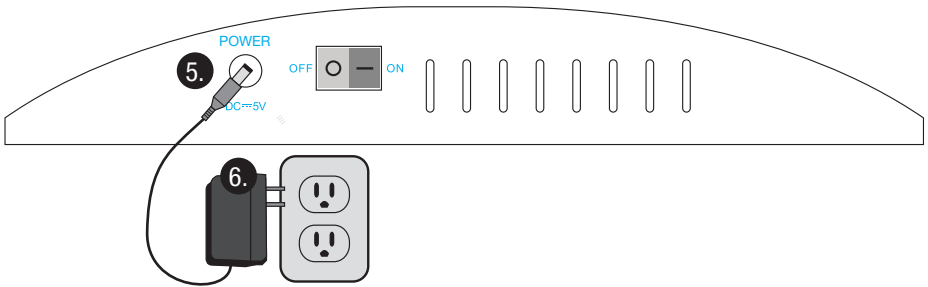
3. Attach both heads at one end of your audio cable to the audio outputs labelled "Zone 1" and "Zone 2" on your SB-2.
4. Attach the other ends of your audio cable to the amplifier inputs. If you only have one amplifier input, plug only one cable head in and leave the other one dangling. You will not be needing it.

### Setting up on-hold music and messages for phone (Optional)

To complete the circuit to the telephone system, follow steps 1 to 4, but make sure you attach one head of the audio cable to the amplifier input linked to music on-hold.

## Setting up power

5. Attach the power module to the power port on the SB-2.
6. Attach the power plug to the power outlet. A **solid blue** light will turn on to indicate that your device has been plugged in properly.



## Activate

7. Activate your device by calling 1.888.571.9040 and entering the 9 digit initialization code on your telephone dial.
8. Adjust volume from your amplifier, device or phone system to desired level before playing your music.

**THIS IS YOUR 9 DIGIT INITIALIZATION CODE**

Please refer to page 7  
in french instructions

**Congratulations your music should start playing in no time!  
Remember, your device should remain powered at all times**

### Important information for clients receiving internet updates

- An active network connection must be maintained to receive updates. These updates will be uploaded from the Stingray Business servers to your device during the time slots you will have preselected.

## Online Control

Start exploring your new musical universe by logging into the remote SB-2 Management Interface. To access the page, visit <http://cs.business.stingray.com/login> and enter your email address.

## Frequently Asked Questions

View our answers to frequently asked questions by visiting <http://business.stingray.com/faq> and clicking on [Questions related to our media players](#).

## Environmental operation conditions and physical specifications

Use	Indoor
Unit packing: (LxWxH)	283*153*61mm
Unit packing	0.76kg
Dimensions	115*115*35mm
Power Supply Voltage Input	100-240 VAC 50-60hz; Output: 5V 2A
Power Consumption	8 Watts
Supported Connector	Types 2 RCA Outputs (two mono zones or one stereo zone)
Device Approval	FCC, CE and ROHS
Power Supply Approval	UL SA CE RoHS certified equipment

## Contact us

Email [businesssupport@stingray.com](mailto:businesssupport@stingray.com)  
Phone 1.888.685.2486